

## CEO'S Message

Mother Nature has certainly provided challenging times for the marina recently. With the earthquake, then king tides, torrential rain and a 50 knot southerly, the staff were on edge wondering what sort of damage the marina would sustain.

The 7.8 Richter scale earthquake did have an impact and caused some damage to our facilities. The most significant was to the tarseal surfaces in Trailer Park A, on the central causeway and the boatyard. Cracks appeared, ranging from around 10mm in width along the central causeway to almost

20mm in Trailer Park A. The tarseal on the hardstand separated from the concrete surface by about 15mm. In front of the Lowry Bay Yacht Club and at the northern end of Trailer Park A the tarseal has lifted and the damage will require removal and relaying of new tarseal. The cracking will be repaired more simply by filling the cracks with liquid tar and sand. A contractor has been booked to complete this work within the next month.

I have requested the Hutt City Council to organise an engineering report on the condition of the two breakwaters.

..... more on page 2



These photos show some of the damage resulting from the earthquake including cracks in the tarseal and broken gate posts which are being stored at Seaview Marina for CentrePort.



The Seaview Marina Board, management and staff wish all our customers a very Merry Christmas and Happy New Year. We thank you for your business in 2016 and look forward to being of service to you in the future.

### Inside

Compass Coffee comes to Seaview Marina • Boat Show update • 24 Hour Endurance Race • Earthquakes-are you prepared? • New fuel supply system update • marina maintenance now online • Sector lights back in action • and more...

In April 2010 a full engineering investigation of the breakwaters found them to be in excellent condition, however in the light of recent events, it is timely to have a review completed now.

The engineers who designed the Wellington Marine Centre were contracted to inspect the building to determine if there was any damage as a result of the earthquake. Their report came back on 21 November giving the building a clean bill of health. There was no damage, apart from a couple of small cracks between the floor and two portal frames, but these had no structural significance.

The high tides and strong southerly gale created another test for the marina. In my 14 years here I have only seen the tides as high on one occasion, where they reached the central causeway surface for a day or two. I came in at 8pm at high tide on 17 November when the southerly was blowing hard. The breakwater on the western side was almost under water with waves breaking over it.

Overall we have been very lucky, compared to other Wellington businesses. I hope to have all the maintenance work resulting from the quake completed by the end of the year.

As this is the last newsletter before Christmas I would like to wish you all a relaxing and enjoyable festive season.

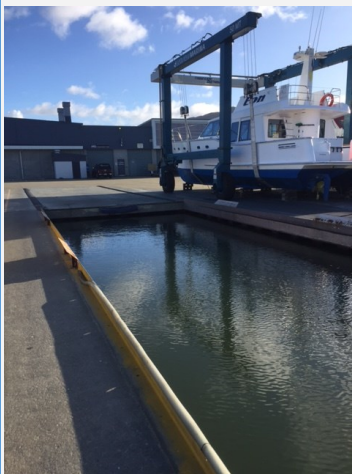
**Best wishes**  
**Alan McLellan**

## New Pier Trolleys

Pier Trolleys seem to have a life of their own and are always disappearing from one pier to another. It is frustrating when they are removed from the piers that they are allocated to and not returned. To relieve the pressure, we have purchased another 7 trolleys, giving one additional trolley per pier.

The new trolleys are superior to those we have now. They are not only sturdier but also feature four holes for securing fishing rods. We all know how difficult it can be trying to secure fishing rods in the old trolleys.

The trolleys have pier identification letters on them so please assist fellow boat owners by returning trolleys to their allocated pier.



This month's Super Moon resulted in some of the highest tides ever seen at Seaview Marina. At 1.9m they came close to the top of the seawall and flooded a section of the carpark opposite the marina office.

These images show the effect of the tides on the sea wall, main carpark and the boatyard dockway.

**Follow us**



**BE PREPARED IN AN EMERGENCY  
WHAT TO DO IN AN EARTHQUAKE**

Recent events have reminded us that major earthquakes can happen at any time.

Coastal areas of the Wellington Region are vulnerable to tsunami from local earthquakes, which could arrive within ten minutes. **The whole of Seaview Marina is classed as a tsunami red zone which represents the highest risk zone and is the first place people should evacuate from if there is an official tsunami warning or large local earthquake.**

The marina does not have emergency alarms and there will be no sirens or other official warning for a local source tsunami. Marina staff may not be on site if an earthquake occurs outside our normal hours of operation.

If you are at Seaview Marina and feel a long or strong earthquake, it may be the only warning of a tsunami.

Remember that a tsunami is not just one wave, there will be more following. IMMEDIATELY evacuate out of tsunami zones to high ground. Do not drive! Do not return to the marina until you have been given the all clear.

You can reduce your risk by being prepared. These are some of the things you can do:

- Have a getaway kit.
- Plan your evacuation route. Know where you will go from the marina and walk there to gauge how long it will take.
- Work out how you will communicate with family or friends if you are separated.
- Liveaboards might want to connect with others to support those who may not be able to cope in a disaster.

Copies of the Civil Defence guide to being prepared in an emergency are available in the marina office.

For further information visit:  
[www.getprepared.org.nz](http://www.getprepared.org.nz)

**BURNSCO**   
THE JOURNEY STARTS HERE

**Seaview Branch**  
100 Port Road, Seaview Marina  
Ph. 04 586 6955  
Monday to Friday: 8:30am to 5:30pm  
Saturday & Sunday: 8:30am to 5:00pm

**LED Trailer Lights**

- Compact, slimline design
- Fully submersible
- Pre-wired and supplied with fastenings
- 5 year warranty



STANDARD PRICE **\$49.99**  
SAVE **\$30**

35949

**LifeRaider Hook-7**

- Chartplotter, fishfinder, depth sounder
- CHIRP sonar and Hybrid Dual Imaging (HDI) built in
- 7" 800 x 480 pixel screen
- Includes Full Navionics Gold NZ chart
- Transom transducer included



STANDARD PRICE **\$999.99**  
SAVE **\$300**

35975

**Inflatable Lifejacket**

- Soft neoprene collar
- 150 newtons of buoyancy
- Manual inflation
- Adult multi-fit 40kg +



**\$99.99 EACH**

**CARDHOLDER BONUS**  
**2 FOR \$150**

**Waterproof LED Spotlight**

- Waterproof IP67
- 550 Lumen
- 240V charger and 12V direct lead included



STANDARD PRICE **\$59.99**  
SAVE **\$17**

36128

**Fishing Tackle Bag**

- 3 medium tackle trays
- 1 small tackle tray
- Rubber waterproof base
- Adjustable shoulder strap



**\$49.99**

**CARDHOLDER BONUS**  
FREE RILLET KNIFE AND SCALES RRP \$34.98  
WITH BURNSCO FISHING TACKLE BAG PURCHASE

39427/  
34625/33827

**Gift Cards**

The perfect gift.



mGift

SPECIALS END 27 DECEMBER 2016



# WELLINGTON

# BOAT SHOW

## BOAT SHOW UPDATE NOVEMBER 2016

### New Exhibitors

We are pleased to announce two new exhibitors, SEALEGS with their range of amphibious boats and Signature Promotions, who are representing a range of marine products. They will also have a classic speed boat from 1950's on display.

Exhibition sites are selling well and are still fielding a good number of exhibition enquires from all over New Zealand.

### Tickets now on sale

Early bird tickets are now on sale through iTicket and are available on line. Early bird tickets \$12 per day or gate sales \$15. Children under 15 free.

### Yachting New Zealand:

Are busy working with local clubs to organize their displays for the show. These clubs are Muritai, Lowry Bay, Heretaunga, Evans Bay, Worsler Bay, RPNYC, Titahi Bay, Paremata, Plimmerton, also others like Ocean Water Sports, TRIYA, and the Youth Sailing Scheme will be presented.

The clubs will have an indoor/outdoor displays in the Boat yard behind Burnsco alongside commercial boatyard activities like travel lift demonstrations.

### Food Vendors

All food sites are now sold and we are pleased to announce a great selection of food will be available throughout the show. The Butcher and Brewer will feature fine foods, NZ wines and craft beers alongside food trucks selling an Asian selection, Kiwi staples and good coffee.

### Web Site live

Our Web Site is now live with information for Berth Holders and Liveboards. We have provided information on parking, show hours, access issues etc and there is also a FAQ section. <http://dev-wellington-boat-show.pantheonsite.io/>  
Watch for our regular updates.

### Accommodation Partners

Accommodation requirements for exhibitors and visitors will be varied from Holiday parks, Motels and Hotels.

We are very pleased to welcome Rydges Wellington and the Museum Hotel as accommodation partners to The Wellington Boat Show.

### General Notes from us

This week we had a meeting with the Seaview Marina Community Group. It was a positive meeting with some very relevant points raised. We agreed to keep communicating on a regular basis to avoid any issues around the show.

Christmas and the summer season is approaching fast so we will go into recess for two weeks and enjoy some boating activities. Should you have any questions please refer to our web site or call Margie Petherick on 0274814782



# WELLINGTON

# BOAT SHOW

&

## 24 HOUR ENDURANCE YACHT RACE

### 6 - 9 April 2017

SEAVIEW MARINA LOWER HUTT WELLINGTON NEW ZEALAND

**EXHIBITOR ENQUIRIES WELCOME**

Adults \$12 Children under 12 Free



[www.wellingtonboatshow.co.nz](http://www.wellingtonboatshow.co.nz)

[info@wellingtonboatshow.co.nz](mailto:info@wellingtonboatshow.co.nz)



# 24 Hour Endurance Yacht Race

## Seaview Marina Supports the 24-Hour Endurance Yacht Race

In April next year Seaview Marina will be hosting the Wellington Boat Show.

This promises to be a fantastic event, not just for the boating community, but also for Hutt Valley residents and indeed the wider Wellington region. Coinciding with the Boat Show, the Lowry Bay Yacht Club will be staging the inaugural 24-Hour Endurance Yacht Race. This is a unique event, never been done before in New Zealand, let alone on Wellington Harbour. Yacht owners from the greater Wellington region have been invited to compete in this race and early indications suggest that there is a lot of enthusiasm and excitement for this race among skippers and their crew.

Yachts will sail non-stop for 24 hours on a circuit set out on Wellington Harbour. The yacht that sails the longest distance within the 24-hour period (corrected by a given handicap, much like a handicap in golf) will take away the prestigious trophy.

This means that all competing yachts – big or small, fast or not so fast – have an equal chance of winning this trophy.

Visitors to the boat show will be able to watch the race in progress on a giant electronic screen that will be set up on the lawn near the yacht club.

The 24-Hour Endurance Yacht Race has attracted many Hutt Valley-based businesses as sponsors, including Seaview Marina Ltd. Seaview Marina is by far the best equipped marina in the greater Wellington region offering safe berths and a one-stop-shop marine centre that services the Seaview boating community.

All visiting yachts that compete in the 24-Hour Endurance Yacht Race will be given free berths for four days during the race and boat show.

**For more information about the 24-Hour Endurance Yacht Race contact**

**Theo Muller on 0274 483931**

or visit [www.lbyc.org.nz](http://www.lbyc.org.nz)

## Defibrillators Save Lives

**This information could save your life, or that of a fellow boatie—we have a defibrillator on site in the marina office.**



A defibrillator is a life-saving machine that delivers an electrical stimulus to the heart to re-start or stabilise heart function.

While all marina staff are fully trained in the use of our defibrillator the unit has full instructions and a voice prompt that allows non-trained operators to use it.





**New Coffee Business  
at Seaview Marina  
(opposite Burnsco)**

**7:30am-3:30pm  
Seven days a week**

**Serving coffees, tea, smoothies,  
gelato, gourmet pies and sausage  
rolls, slices, muffins, Foxtan Fizz  
and more.....**

**Russell Smith**

**Boat Builder**

**Maintenance and Repairs**

**Customer woodwork and Fit outs**

**Wellington Marine Centre Unit 4b**

**Ph: 0212105157**

**russellsmith1946@gmail.com**

## Sector lights at marina entrance repaired

Boaties returning from watching the Guy Fawkes fireworks in Wellington earlier this month reported to the marina staff that the white sector light was not functioning. We have had to remove the whole unit and send it back to Vega Industries in Porirua for repair.

In instances such as this we are required to advise the Harbour Master and the marina administrators also sent a notice to all customers advising that there would be no sector lights operating for a short period.

We have now reinstalled the sector lights after having to replace a faulty battery and some circuitry.

If you see any issues with the navigation lights at night we would appreciate immediate advice. While Seaview Marina staff check the lights on a monthly basis they can fail between these inspections.

## Freshen up for the Wellington Marine Centre

After six years of continual use the paint work in the Wellington Marine Centre hallway and toilets was showing some wear and deterioration. The area needed a new coat of paint.

We also had a bit of water damage in both Strait Marine Ltd and the NZ Police Dive Squad's units. The former was caused by water pipes being chewed by rats, while the latter was the result of a missing roof nail. This work was completed in October.

We have also replaced a couple of pedestrian doors into the units which were beginning to show signs of water damage. Our maintenance programme has identified the remaining pedestrian doors will also need replacement over the next three years.

The signage around the Marine Centre has also been upgraded to provide more visible identification of our tenants and additional health and safety information.

The garden in front of the Wellington Marine Centre, along Port Road, has had a make-over too. The large flaxes have been removed and the area planted with lower growing native species. A bark mulch has been laid over the area and it is now looking very attractive.



## Lowry Bay Yacht Club News

Lowry Bay Yacht Club, which is based at Seaview Marina, has lowered its membership fees for the coming year. Senior membership has reduced from \$150 to \$130 for a full year and additional family members who choose to join are now only charged \$80 for the year.

The reduction in fees has been made possible through a growing membership, now at around 220 people. One of the reasons for this growth has been more launch and cruising yacht owners joining since the Club installed six cruising moorings throughout Wellington harbour with the support of Seaview Marina. Fishers and other boaties are also welcome to join the Club to take advantage of its bar, restaurant and social scene.

The clubhouse is also proving popular as a hire venue, with businesses and community groups taking advantage of its waterfront location within the Marina to hold events.

The Club welcomes all boaties to join them. People

interested in joining can pop in on a Friday night when the bar is open or find out more through the club website

[www.lbyc.org.nz](http://www.lbyc.org.nz).

### Lowry Bay Yacht Club offers:

- ◆ Harbour moorings for short-term use (with generous support from Seaview Marina).
- ◆ Cruising for power and sail.
- ◆ Yacht racing—crew positions available, no experience required.
- ◆ Bar and food.
- ◆ Shore-based fun and friendly members.
- ◆ Venue hire for business events and special occasions.
- ◆ Membership is just \$150 per year (that's less than \$3 per week).

### Bar Hours

- ◆ Friday from 5pm—10pm, meals available from the restaurant.
- ◆ Saturday 4pm—6pm (subject to yacht racing taking place).

### Contact:

Website: [www.lbyc.org.nz](http://www.lbyc.org.nz)

Email: [info@lbyc.org.nz](mailto:info@lbyc.org.nz)

Phone: 04 568-3715 or visit



**Unit 1, Wellington Marine Centre  
100 Port Road, Seaview,  
Lower Hutt  
WELLINGTON**

**Phil: 021 648 304**

**Ph: 04-568 8062,**

**Fax: 04-568 8072**

**[Straitmarine@straitmarine.co.nz](mailto:Straitmarine@straitmarine.co.nz)**

**[www.straitmarine.co.nz](http://www.straitmarine.co.nz)**

Recognised member



## Authorised Dealers for:

**Volvo Penta  
Yanmar  
Cummins Onan**





# Focus on the environment

## Visiting a Northland marina this summer?

To prevent the spread of marine pests, Northland marinas require visiting vessels to have been recently cleaned – that means:

Antifouled in the last **SIX** months

Lifted and washed in the last **one** month

OR



Prove it! Haul-out receipts, paint receipts – check with the marina what proof is required. Some high-risk vessels may be subject to additional marina requirements.

Coming from the Auckland Region? Beware of unwanted hitchhikers! Auckland is a high-risk area for Mediterranean fanworm, a highly invasive marine pest.

### Bookings and Information

To find out more about the clean hull requirements or make a booking, contact us:  
 Whangaroa Marina: 09 405 0505, admin@whangaroamarina.co.nz  
 Bay of Islands Marina (Opua): 09 402 7124, enquiries@boimarina.co.nz  
 Kerikeri (Cruising Club) Marina: 09 407 9434, info@kerikericruisingclub.org.nz  
 Tutukaka Marina: 09 434 3441, marina@tutukaka.co.nz  
 Whangarei Marina: 09 438 2033, whangarei.marina@xtra.co.nz  
 Riverside Drive Marina (Whangarei): 09 438 2248, rd@marsdenrivemarina.com  
 Marsden Cove Marina: 09 432 7740, info@marsdencovemarina.co.nz



## Plastic debris can comprise up to 50% of the indigestible material



in an albatross' intestinal tract.



## What to do with your waste oil

Seaview Marina provides two waste oil collection drums for our customers— one on the boatyard and the other in the container opposite D Pier . Please assist us by placing your waste oil into the drum and do not leave it in buckets or jerry cans outside the bins for our staff to dispose of.



Waste **oil** put down the **drain** can go into **streams** or **ivers** and **kills birds, fish** and **animals.**

## MEDITERRANEAN FANWORM

*Sabella spallanzanii*

The threat: This pest has the potential to be a significant threat to New Zealand's marine biodiversity, through competing with native organisms for food and space, and altering native marine ecosystems. As well, it could be a nuisance species, fouling aquaculture sites and wharf facilities. A small population of the fanworm has been detected in Lyttelton Port.

### What is Mediterranean fanworm?

The Mediterranean fanworm (*Sabella spallanzanii*) is a marine bristle worm which rapidly forms large, dense colonies or groups on submerged hard surfaces and on any fixed object (such as shells and stones) on the sea floor.

The filter feeding fanworm is native to the Mediterranean and Atlantic coasts of Europe but it has also established in Brazil and Australia.

### What does it look like?

The Mediterranean fanworm has a long leathery, flexible tube or stalk supporting a single semi-circular spiral feeding fan that can reach 10 – 15cm in diameter. The tube itself can grow up to 40cm long.

It commonly forms clumps of several individuals, creating a canopy of feeding fans that stretches over the growing surface.

This worm generally lives inside its tube, but extends a fan-like crown of tentacles through the opening of its tube to feed. If disturbed, the fan quickly withdraws into the tube and the opening collapses to a slit.

The tube is often muddy-looking and can be covered with encrusting or fouling organisms.

The fan itself varies from white and pale fawn through to orange and banded red-brown in colour.

### Where would I find it?

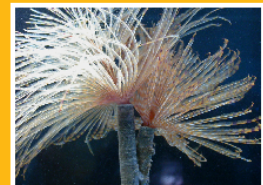
The Mediterranean fanworm likes sheltered, nutrient-rich waters such as in harbours.

It is generally found in shallow waters in depths from one to 30 metres.

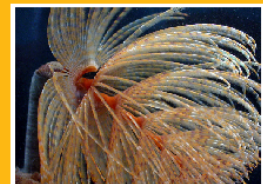
Worms generally colonise any hard surface, including rocks, concrete, wood and steel, as well as seabed organisms such as mussels and oysters.

It has been found on the hulls of moored vessels and on wharf structures and marina piles and pontoons.

PTO for information on how you can avoid spreading the Mediterranean fanworm.



FAN WORM SPECIMEN FROM LYTELTON



SINGLE SPECIMAN SHOWING SPIRAL FAN



Individual specimen from Lyttelton Port, Otago region, and displayed here out of its tube. Fan tentacles on left of shell.

FOR MORE INFORMATION VISIT: [WWW.BIOSECURITY.GOVZ](http://WWW.BIOSECURITY.GOVZ)

November 2008

New Zealand Government

NEW ZEALAND. IT'S OUR PLACE TO PROTECT





## **CHRISTMAS & NEW YEAR OFFICE & BOAT YARD HOURS**

**The marina office and the boatyard will be closed on the following days over the Christmas and New Year period:**

**Sat. 24th- Tues. 27th December inclusive  
Sat. 31st - Tue. January 2017 inclusive**

**At all other times the marina office and boatyard will be open for business as usual.**

**In the event of an urgent enquiry during this period please contact  
Alan McLellan mob: 0274435330.**

**If your call is an emergency please ring: 111**

## **New Diesel Fuel Facility**

Finally, after two years of negotiations with two separate fuel suppliers, we are happy to report the new self-service diesel facility has been installed. Our existing supplier, Farmlands Fuel, came to the party and in all there is about \$50,000 dollars of capital expenditure tied up with the new equipment

The new facility is located at the dockway, on the site of the old pump.

Customers will now able to purchase diesel directly at the pump using your credit or eftpos card or a Farmlands Fuel card. The card reader is located in a glass kiosk alongside the new diesel pump.

The new facility will also allow you to fuel up your vessel by yourself, 24/7, meaning a Seaview Marina staff member will not need to be present.

Seaview Marina will no longer need to reconcile diesel use or send out invoices. Farmlands will be debiting your card directly and then crediting Seaview Marina Ltd.

It is important that due care is taken to mitigate any chance of a diesel spill.

There are two yellow wheelie bins located by the pump which contain materials for cleaning up any minor diesel spills.

***Any spill should be notified immediately to a marina staff member.***



## Get rid of antifouling the easy way!

### *Environmentally friendly vapour blasting*

- Quickly and safely removes antifouling, varnish, corrosion and barnacles from hulls
- Low pressure so can be used on wood, concrete, fibreglass, aluminium and steel
- Most jobs done in a day
- Fixed price quote so no surprises
- Can blast outdoors *in situ* if required

### Contact

Peter Fraser

**Purere Blasting Services**

**0800 - 5 - PURERE**

[peter.fraser@purere.co.nz](mailto:peter.fraser@purere.co.nz)



## Help us 'FIX IT'

Marina staff are always keen to keep on top of maintenance around the marina. As Seaview Marina is a large site, your assistance in reporting faults and maintenance issues is appreciated.

We have kept a register of all maintenance issues reported to the office for many years. Recently the decision was made to improve this by adding a new online reporting process. This allows our customers to report and follow the resolution of the maintenance. It also provides a view of our ongoing record of maintenance work done around the marina.

To ensure issues are dealt with promptly please report all faults or maintenance matters, including details of the problem and the location, to the office staff or by email to:

[fix@seaviewmarina.co.nz](mailto:fix@seaviewmarina.co.nz)

Emails will receive an acknowledgement and your request will be logged on the marina website. To follow the resolution of any issue raised please go to [www.seaviewmarina.co.nz](http://www.seaviewmarina.co.nz) and click on 'About Our Marina', then 'Maintenance'.

***Thank you for your assistance.***

## Slow down

Speed of craft must not exceed 5 knots when:



- within 50 metres of another vessel, raft or person in the water.
- within 200 metres of shore or structure, on the inshore side of any row of buoys marking that distance from shore.
- within 200 metres of any vessel or raft flying Flag A (Diving Flag).

No vessel shall exceed a speed of 12 knots in the Lambton Harbour area (as shown on map).

(bylaws 3.2 and 6.8)





**professional cut and polish on your  
boat/launch**

- **Restore and retain that stunning showroom shine**
- **Get rid of oxidation, and protect your expensive asset**
- **3 year warranty**
- **Premium level UV protection**

Call Brent on 027 450 5504  
[wellington@toughguard.co.nz](mailto:wellington@toughguard.co.nz)  
[www.toughguard.co.nz](http://www.toughguard.co.nz)

## **Laundry Improvements**

Our abluion block and laundry has been in place for eleven years and it is no wonder that some of the washing machines and driers have reached the end of their working life.

Recently one machine failed and was beyond repair. As well as this, comments from our live-boards indicated that with the drier cycles being longer than the washing cycles, there was the need for an extra drier.

It was decided the best option was to purchase a couple of new combined washing machine/drier units which house the drier above the washing machine.

This has increased our laundry service from 2 washing machines to 3 and the number of driers from 2 to 4 which should improve efficiency in the laundry and considerably reduce pressure on the facility at peak times

# **MG COMPOSITES**

**Matt Gottard**  
**M: 021 121 4151**  
**E: [matt.gottard@mgcomposites.co.nz](mailto:matt.gottard@mgcomposites.co.nz)**

**QUALIFIED SPECIALIST IN COMPOSITE  
CARBON FIBRE, KEVLAR & FIBRE GLASS**

**BOATBUILDER      MARINE REPAIRS  
BUILDING   &   CONSTRUCTON**



# WE ARE NOW **1** IN WELLINGTON

Dean Hoare

Phone 021841199

deanhoare@nzboatsales.com

[www.nzboatsales.com](http://www.nzboatsales.com) [www.gulfgroup.co.nz](http://www.gulfgroup.co.nz)



Your one-stop shop for

- Fishing Charters
- Fish bait and tackle sales
- Rod and reel servicing
- Open 7 days through summer
- 8:30am-5:30pm Monday to Friday
- 7am-4pm Saturday/Sunday

Pete Lamb Fishing  
ph: 0274439750

Charter bookings and Seaview Shop:  
Phone: 04 5894326  
Rongotai shop and wholesale bait  
Phone: 04 3878150

[www.petelambfishing.co.nz](http://www.petelambfishing.co.nz)



## Seaview Marina Hours & Contact Details

- Office Hours** 8am-5pm, Monday to Friday  
8:30am-12 noon, Saturday
- Boat Yard Hours** 8am-5pm, Monday to Saturday
- Office Phone:** 04-5683736 **Fax:** 04 5683586
- Staff**
- CEO:**  
Alan McLellan M: 027 443 5330 E: alan@seaviewmarina.co.nz
- Marina Administrator:**  
Suzanne Willis M: 0275 995 857 E: suzanne@seaviewmarina.co.nz
- Assistant Administrator:**  
Alison Watt M: 021 449 845 E: alison@seaviewmarina.co.nz
- Boat Yard Supervisor:**  
Mike Croft M: 0275 022 888 E: mike@seaviewmarina.co.nz
- Maintenance Dockhand:**  
Tony Kelly M: 0274 102 196 E: tony@seaviewmarina.co.nz

